

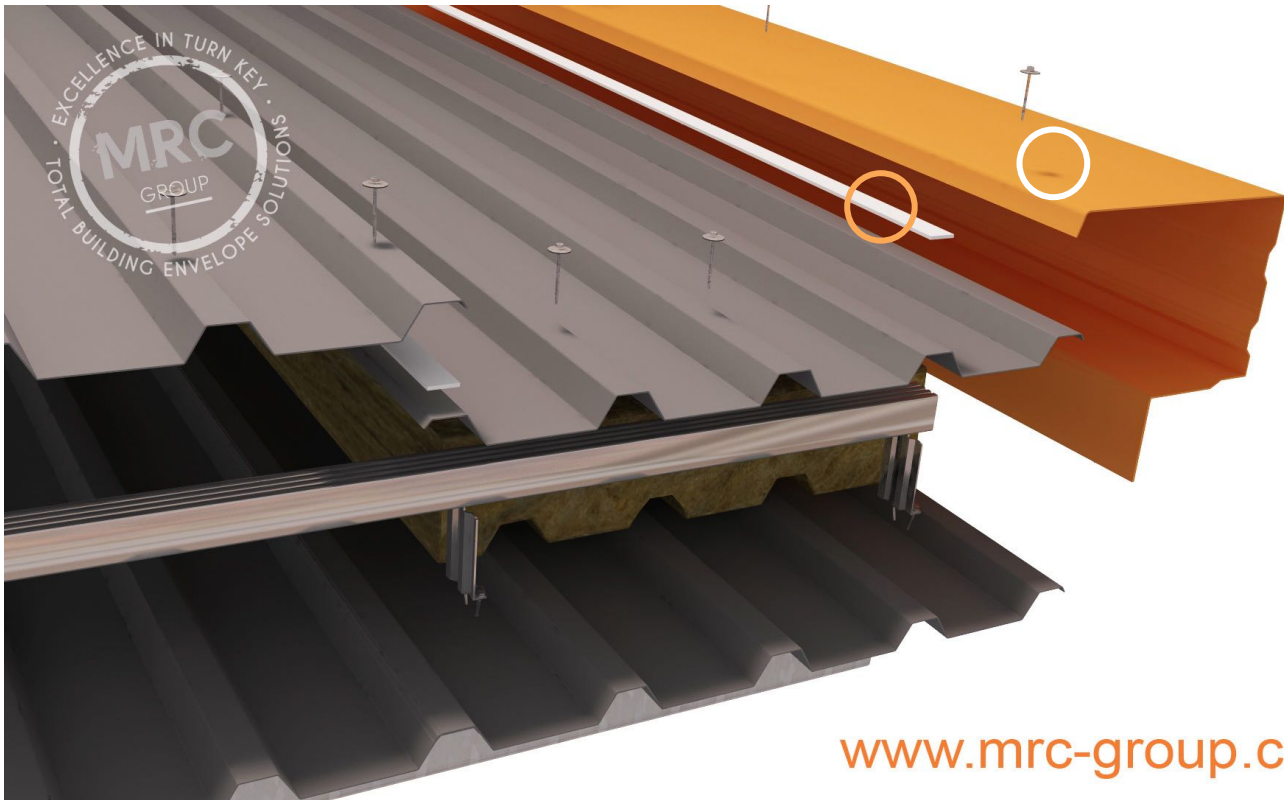
# THE FERRUM RANGE

Excellence in Metal  
Roofing & Cladding

[info@mrc-group.co.za](mailto:info@mrc-group.co.za)  
[www.mrc-group.co.za](http://www.mrc-group.co.za)



## EXCELLENCE IN CONSTRUCTING PERIMETER DETAILING - BARGE



[www.mrc-group.co.za](http://www.mrc-group.co.za)



### EXCELLENCE IN CONSTRUCTING A BARGE DETAIL:

The purpose of a barge flashing is to complete the intersection between the roof and wall planes and to seal the building against water penetration. For a barge flashing to be effective, it must be durable, low-maintenance, weather resistant, compatible with adjoining materials, and also able to accommodate thermal movement.

The complete construction of the barge detail must prevent direct and wind driven water from entering the building and close off the insulation void. All barges must cover at least two ribs of the roof sheet and have sealant tape between the flashing and rib.

MRC Group's commitment to excellence in perimeter detailing, is backed with the unrivalled single source 'Guardian' System Warranty which covers design, materials, installation & maintenance for the term of the roofing and cladding system.

### ESSENTIAL KEY COMPONENTS:

-  METAL BARGE FLASHING WITH FASTENERS
-  SEALANT TAPE BETWEEN THE RIB AND THE FLASHING

The barge flashing must cover a minimum of 2 ribs to avoid water ingress

The angle of the turn down of the edge of the barge flashing is to be a minimum of 30 degrees

Please note it is essential that **ALL** components are installed correctly to withstand the impact from wind driven rain and to stop water ingress

JOHANNESBURG – DURBAN – CAPE TOWN

For project specific specifications, CAD Details, Samples or technical assistance please contact our technical department on +27 (0) 861 672 476 or refer to our Technical Brochure available on [www.mrc-group.co.za](http://www.mrc-group.co.za)

All Information correct as of the date this document was created 01 April 2015.

© Copyright 2015 MRC GROUP Copying or reproduction of these material are strictly prohibited

Reference number: MRC/FR/PDB/001

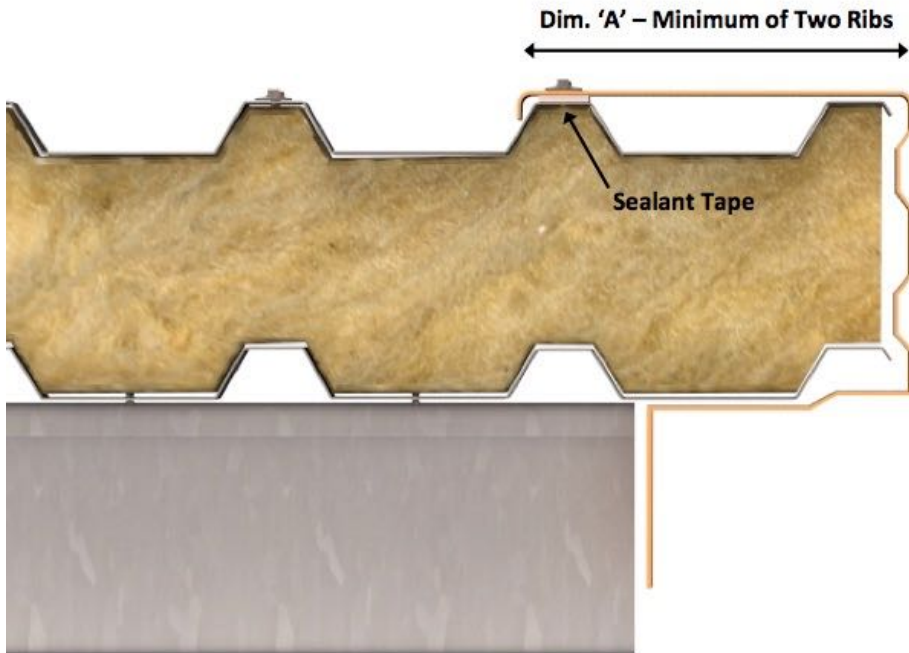
# THE FERRUM RANGE

Excellence in Metal  
Roofing & Cladding

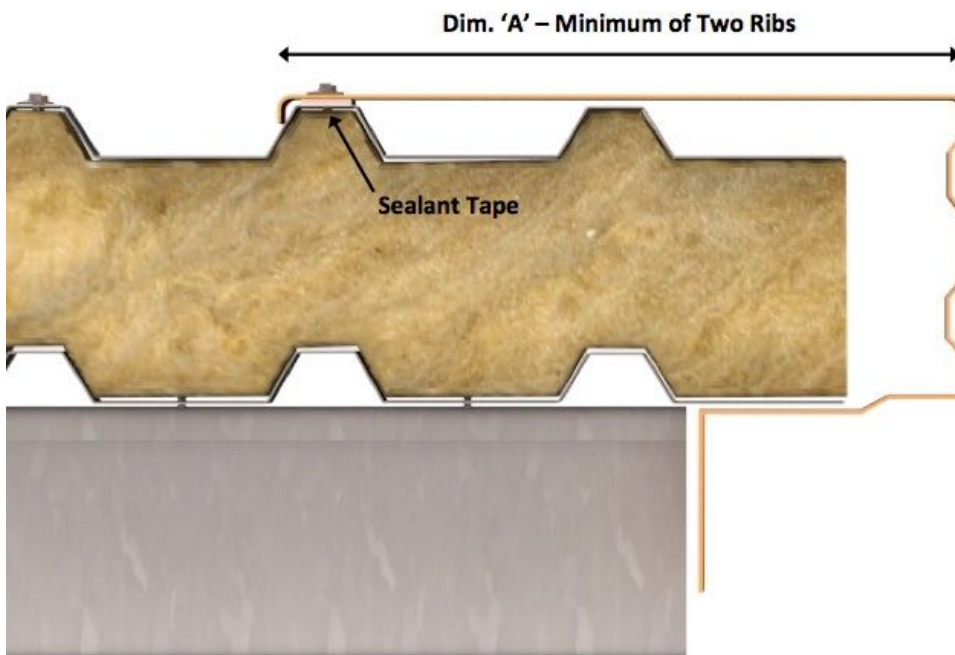
[info@mrc-group.co.za](mailto:info@mrc-group.co.za)  
[www.mrc-group.co.za](http://www.mrc-group.co.za)



## EXCELLENCE IN CONSTRUCTING PERIMETER DETAILING - BARGE



Illustrations compare the different sizes of barge flashings depending on the finishing position of the roof sheet.



JOHANNESBURG – DURBAN – CAPE TOWN

For project specific specifications, CAD Details, Samples or technical assistance please contact our technical department on +27 (0) 861 672 476 or refer to our Technical Brochure available on [www.mrc-group.co.za](http://www.mrc-group.co.za)

All Information correct as of the date this document was created 01 April 2015.

© Copyright 2015 MRC GROUP Copying or reproduction of these material are strictly prohibited

Reference number: MRC/FR/PDB/001

# THE FERRUM RANGE

Excellence in Metal  
Roofing & Cladding

[info@mrc-group.co.za](mailto:info@mrc-group.co.za)  
[www.mrc-group.co.za](http://www.mrc-group.co.za)



## EXCELLENCE IN CONSTRUCTING PERIMETER DETAILING - BARGE

### TECHNICAL DATA FOR CORRECT CONSTRUCTION:

#### DESIGN OF THE METAL BARGE FLASHING

To determine the overall girth of the barge flashing the following should be considered:-

- Roof Profile – distances from rib to rib
- Depth of the roof construction
- Wind loads, Site location and Environment

Dim. 'A' – A barge flashing must cover a minimum of two ribs.

If the position of roof sheet rib finishes flush then Dim 'A' will be 220mm, should the rib of the roof sheet NOT finish flush then Dim 'A' could be up to 344mm or above.

(Please note this calculation is based on a standard IBR Profile.)

Should the gable of the building be angled on plan then you could need barge flashings that cover 3 or 4 ribs, to provide the minimum of 2 ribs at the narrowest point.

#### SEALANT TAPE BETWEEN THE ROOF SHEET & THE FLASHING

The sealant tape between the roof sheet rib and the flashing is essential to stop wind driven rain entering the barge detail. Should any water get into the detail, past the sealant, then the force from the wind will have been stopped and the water will roll down the pan into the gutter.

#### FIXING THE BARGE FLASHING

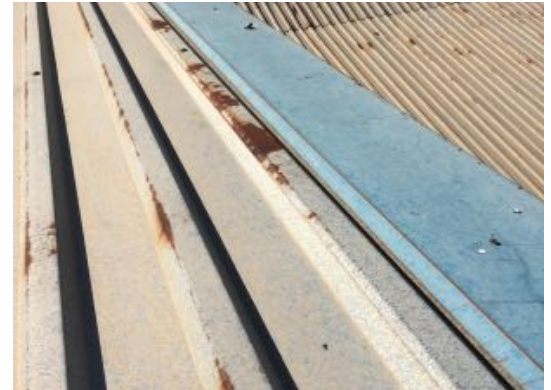
Class 3 or 4 (depending on the location of the site) tapered stitching screw with 16mm diameter aluminum bonded 3mm EPDM washer, at a maximum of 500mm centres.

#### SYSTEM WARRANTY

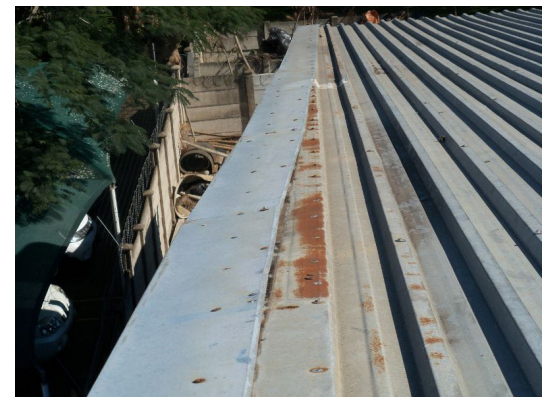
Up to 20 year, single source 'Guardian' System Warranty covers Design, Materials, Workmanship & Maintenance.

#### CAUTIONARY NOTE

For the long term performance of the barge detail, it is essential that all components are installed correctly. Should any of the components such as sealant tape be omitted, or the flashing only covers 1 rib instead of 2, then water will enter the detail.



Steel barge flashing only covering 1 rib



Angled barge flashing only covering 1 rib



Lapped barge flashing only covering 1 rib and leaking

### ACCREDITATIONS



JOHANNESBURG – DURBAN – CAPE TOWN

For project specific specifications, CAD Details, Samples or technical assistance please contact our technical department on +27 (0) 861 672 476 or refer to our Technical Brochure available on [www.mrc-goup.co.za](http://www.mrc-goup.co.za)

All Information correct as of the date this document was created 01 April 2015.

© Copyright 2015 MRC GROUP Copying or reproduction of these material are strictly prohibited

Reference number: MRC/FR/PDB/001