

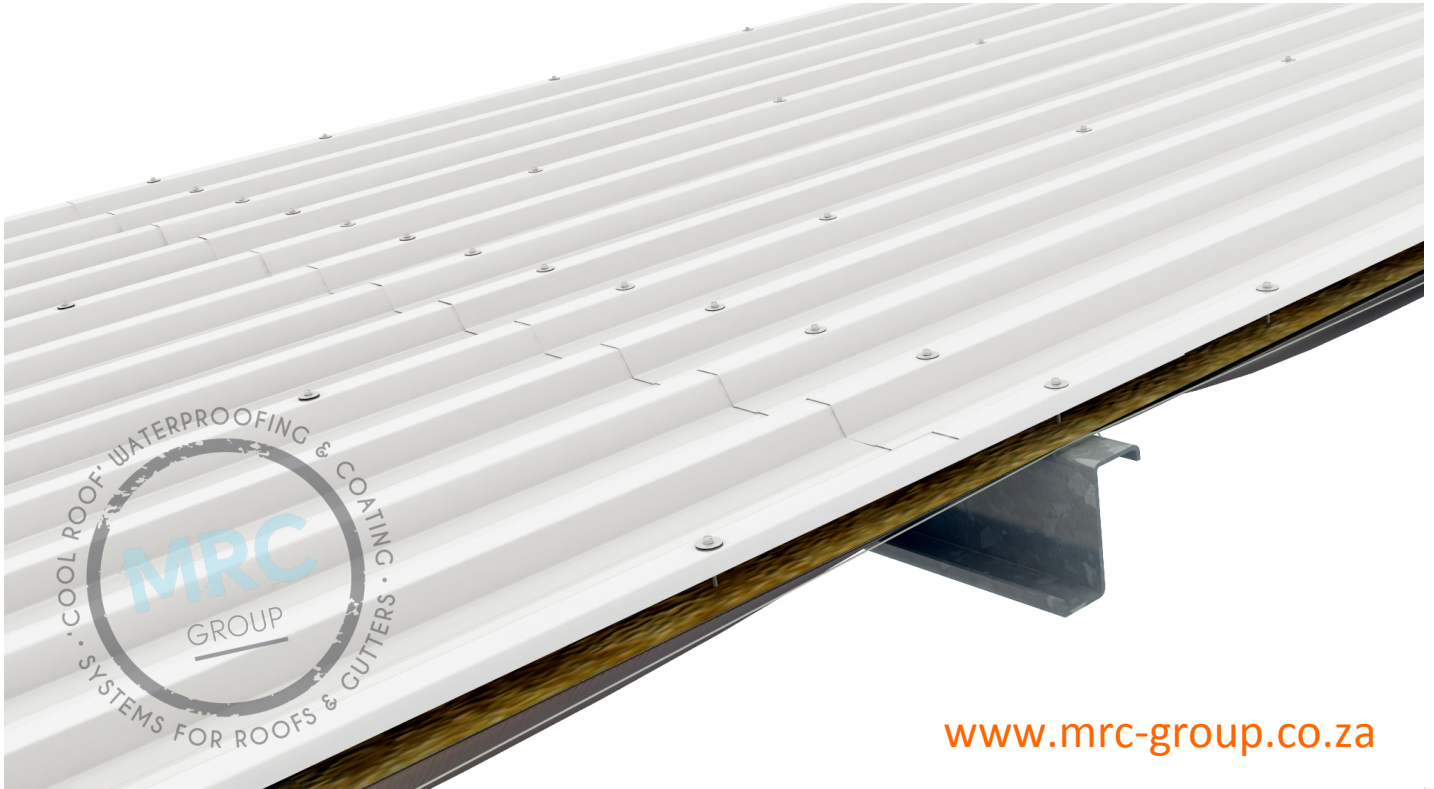
THE IMPERVIOUS RANGE

Excellence in Liquid
Applied Waterproofing

info@mrc-group.co.za
www.mrc-group.co.za



LIQUID APPLIED 'COOL ROOF' WATERPROOFING FOR METAL ROOFS



www.mrc-group.co.za

SYSTEM OVERVIEW:

MRC's range of liquid applied 'cool roof' waterproofing systems provides a seamless monolithic long-term solution to leaky or existing metal roof and associated gutters with surface rust.

Our extensive range of waterproofing solutions in an array of materials is backed with guarantees of 5, 10 or 20 years even under water ponding conditions.

MRC's waterproofing systems provide the ability to extend the life of existing metal roof sheeting, with the added benefit of our 'cool roof' technology providing a thermal barrier that reflects or dissipates the sun's rays and reduces the temperature within your building.

MRC Group's installed system is backed with the unrivalled single source 'Guardian' System Warranty which covers design, materials, installation & maintenance for the term of the roofing and cladding system.

KEY FEATURES:

- Applied to existing metal roof sheeting and associated gutters
- Equivalent R-Value performance of at least 1 (m².K/W)
- Dramatically reduces the surface temperature of the existing metal roof sheeting
- Avoids the costs of stripping and disposing of existing materials
- Reduces thermal expansion and contraction and reduces thermal impact damage
- Extends the life of the existing metal roof by up to 20 years
- Backed with the up to 20 year 'Guardian' System Warranty

JOHANNESBURG – DURBAN – CAPE TOWN

For project specific specifications, CAD Details, Samples or technical assistance please contact our technical department on +27 (0) 861 672 476 or refer to our Technical Brochure available on www.mrc-group.co.za

All Information correct as of the date this document was created 01 April 2015.

© Copyright 2015 MRC-GROUP Copying or reproduction of these material are strictly prohibited

Reference number: MRC/IR/MC/001

THE IMPERVIOUS RANGE

Excellence in Liquid
Applied Waterproofing

info@mrc-group.co.za
www.mrc-group.co.za



LIQUID APPLIED 'COOL ROOF' WATERPROOFING FOR METAL ROOFS

TECHNICAL DATA:

SPECIAL NOTE: Most steel surfaces in summer will reach between 80 – 100°C. This heat is absorbed and radiates into the building below, which dramatically heats up the internal air temperature.

Using MRC's 'Cool Roof' Waterproofing solutions significantly reduces the temperature of the existing roof sheet.

PRIMER & RUST INHIBITOR

MRC Galv Etch Cleaner to be used on any rusty steel surfaces prior to waterproofing.

PREPARATION

- Surfaces to be coated are firmly fixed, sealed, clean, dry, smooth, and free from frost, contaminants, loose materials, voids, protrusions and organic growths.
- Existing coverings and/or new construction are approved by MRC for compatibility with their products.

SOME OF MRC'S 'COOL ROOF' WATERPROOFING SOLUTIONS

- AquaFlect 5, 10 & 20 – High solids polyurethane.
- HydroFlect 5 & 10 – Acrylic based.
- Gaco – High solids silicone.
- INCA Thermal Technology – Ceramic based.

Colours: Generally White but others colours can be applied.

THERMAL PERFORMANCE

- Equivalent R-Value performance of at least 1 (m².K/W) . i.e. equivalent of approx.75mm of compressed insulation.
- Reduces thermal movement of steel by approx. 2.5 times.

REFLECTIVITY

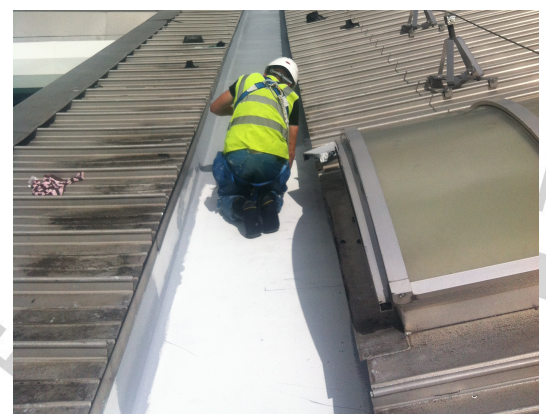
- 100% of harmful UV radiation & 86% of solar radiation

FIRE PERFORMANCE

- Contains fire retardant preventing spread of flame.

SYSTEM WARRANTY

- Up to 20 year, single source 'Guardian' System Warranty covers Design, Materials, Workmanship & Maintenance



ACCREDITATIONS



JOHANNESBURG – DURBAN – CAPE TOWN

For project specific specifications, CAD Details, Samples or technical assistance please contact our technical department on +27 (0) 861 672 476 or refer to our Technical Brochure available on www.mrc-group.co.za

All Information correct as of the date this document was created 01 April 2015.

© Copyright 2015 MRC-GROUP Copying or reproduction of these material are strictly prohibited

Reference number: MRC/IR/MC/001