

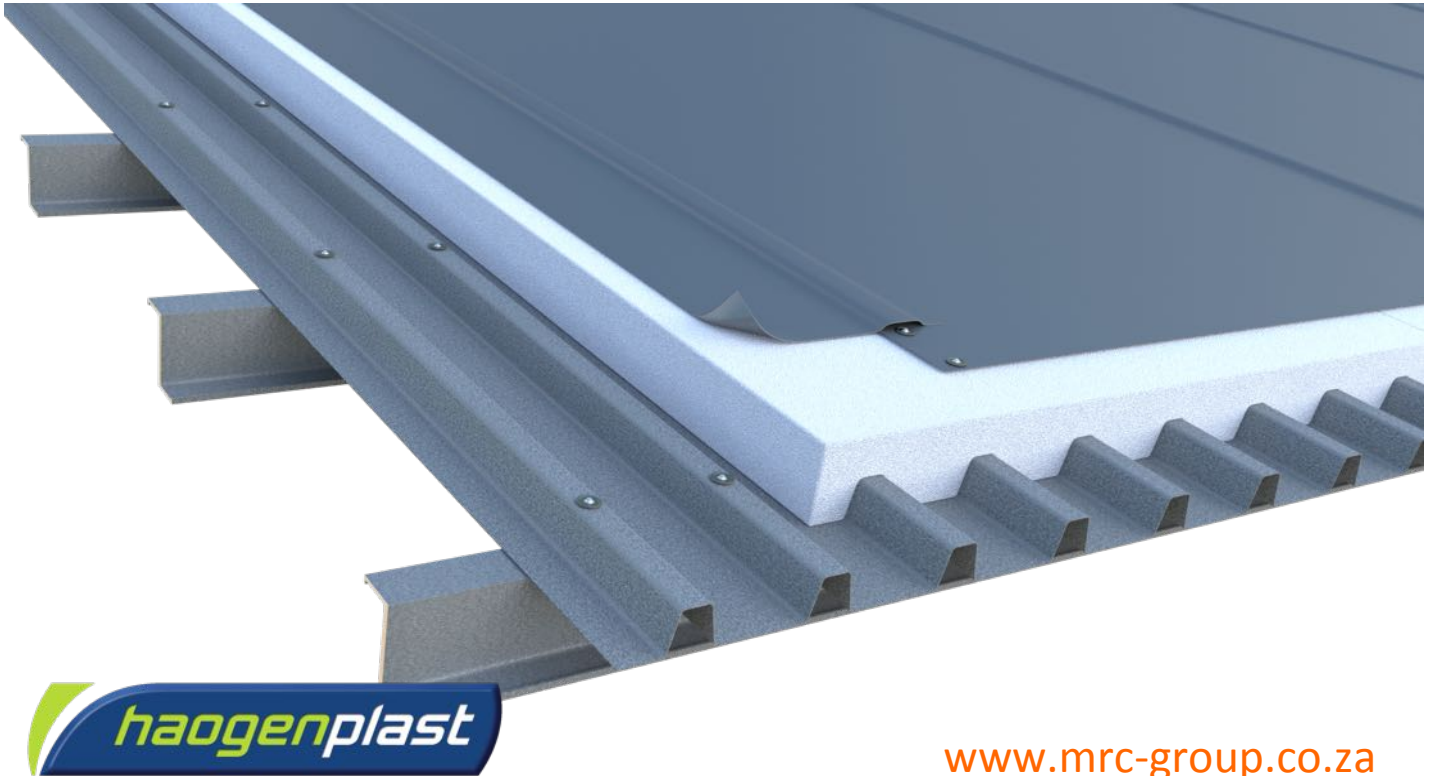
THE IMPERVIOUS RANGE

Excellence in
Waterproofing Systems

info@mrc-group.co.za
www.mrc-group.co.za



OVER-ROOFING WITH SINGLE-PLY WATERPROOFING MEMBRANES



www.mrc-group.co.za

SYSTEM OVERVIEW:

MRC's range of single-ply PVC waterproofing membranes, supplied by Haogenplast (one of the world's leaders in Elva based formulations), are perfectly suited to use to over-roof existing metal roofs without having to remove the existing roof system therefore keeping the building operational.

Haogenplast's Ogen Flex or the premium Elva Flex PVC roof membranes, provide a quick to install, seamless, monolithic long-term waterproofing solution for metal roofs, even around roof penetrations, without the need for back flashings.

Insulation is laid into the existing metal roof profile to form a flat deck that the single-ply roof membrane system installed onto.

MRC Group's installed system is backed with the unrivalled, single source, Guardian™ System Warranty covering materials, installation & maintenance for the term of the waterproofing.

KEY FEATURES:

- Used to over-roof without having to remove the existing metal roof
- Seamless hot air welded laps & joints
- Fully adhered or mechanically fixed options
- R-Value thermal performance up to 10 (m².K/W)
- Improves acoustic performance
- Resistant to microbial, chemical and environmental attacks
- Good solar reflectivity that reduces heat in the roof
- Flame retardant material
- Backed with the up to 20 year Guardian™ System Warranty

JOHANNESBURG – DURBAN – CAPE TOWN

For project specific specifications, CAD Details, Samples or technical assistance please contact our technical department on +27 (0) 861 672 476 or refer to our Technical Brochure available on www.mrc-group.co.za

All Information correct as of the date this document was created 01 April 2015.

© Copyright 2015 MRC-GROUP Copying or reproduction of these material are strictly prohibited

Reference number: MRC/IR/SPOR/001

THE IMPERVIOUS RANGE

Excellence in
Waterproofing Systems

info@mrc-group.co.za
www.mrc-group.co.za



OVER-ROOFING WITH SINGLE-PLY WATERPROOFING MEMBRANES

TECHNICAL DATA:

MATERIAL & THICKNESS

Specially formulated calendared soft PVC sheeting, laminated with a reinforcing polyester scrim – Colours generally white or grey but other colours are available depending on quantity required.

- Ogen Flex OR Elva Flex – 1.2 & 1.5mm. (Roll 20 x 1.5 / 2.4m)

Elva Flex is used in heavy industry areas, providing additional protection against chemicals, oils and exhaust gases from flues.

VAPOUR CONTROL LAYER

- MRC's 500 vapour control layer should be incorporated between the insulation and the substrate. All joints and edges of the vapour barrier should be sealed accordingly.

LAPS AND WELDING

- Side overlap width is 100mm.
- Automatic or manual hot air minimum welding 30mm.
- Mechanical fixings accommodated within the lap.

THERMAL PERFORMANCE

- Walkable profiled high density 30kg /m³ expanded polystyrene board to fill the troughs of the existing metal roof complete with head of insulation above the crowns of the existing roof sheeting providing the required R-Value performance.

FIXING OF THE SYSTEM

- Mechanically fixed systems are more commonly used above lightweight metal substrates, depending on the 'pull out' value of the metal roof system.

PENETRATIONS IN THE ROOF

- Single-Ply roof membrane cut and welded around all penetrations with a minimum 150mm up stand, with no requirement for back flashings.

SYSTEM WARRANTY

- Up to 20 year, single source Guardian™ System Warranty covers Materials, Workmanship & Maintenance.



ACCREDITATIONS



JOHANNESBURG – DURBAN – CAPE TOWN

For project specific specifications, CAD Details, Samples or technical assistance please contact our technical department on +27 (0) 861 672 476 or refer to our Technical Brochure available on www.mrc-group.co.za

All Information correct as of the date this document was created 01 April 2015.

© Copyright 2015 MRC-GROUP Copying or reproduction of these material are strictly prohibited

Reference number: MRC/IR/SPOR/001