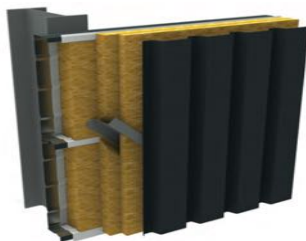
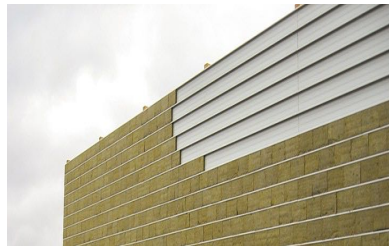




Offices:
Johannesburg
Durban
Cape Town

EXCELLENCE IN STRUCTURAL TRAY SOLUTIONS

- Range of 600mm wide structural cassette liner trays 90 – 160mm deep.
- Single spanning up to 6 metres and double spanning up to 12 metres.
- Can be installed on roofs and walls.
- No requirement to use purlins as the trays can span from column to column on a wall, or rafter to rafter on a roof.
- Perforated trays available to absorb sound.
- Range of differing roof and cladding profiles can be used with the tray.
- Backed with a single source up to 20-year Guardian™ Warranty.



GUARANTEED TO SAVE YOU MONEY!

www.mrc-group.co.za

Email: info@mrc-group.co.za

